

A150F

Aluminium Folding Mobile Hoist

PRISM MEDICAL UK



Introduction	2
Overview	2
Components of the Mobile Hoist	3
Component List	4
Specifications	5
Cautions	6
Assembly Instruction	7
Disassembly Instruction	13
Operation	
Charging.....	15
Start.....	15
Forward movement.....	16
Turning.....	16
Leg Adjustment.....	17
Raising and Lowering Boom.....	17
Castors and Braking.....	17
Basics in transferring an individual.....	18
Emergency Stop & Lowering.....	20
Technical Specifications	21
Do's and Don'ts	22
Trouble Shooting.....	23
General inspection and maintenance.....	24
Points of Attachment - Checklist	25
Service record history.....	26
Warranty.....	30

Owner's Manual

Use and Care
Trouble Shooting
Warranty Information

PRISM MEDICAL UK

Prism Medical UK
Unit 4 Jubilee Business Park
Jubilee Way
Grange Moor
Wakefield
WF4 4TD

Tel: 0844 980 2260
Fax: 0844 980 2261
Website: www.prismmedical.co.uk



CAUTION: DO NOT ATTEMPT TO USE THIS EQUIPMENT WITHOUT FIRST UNDERSTANDING THE CONTENTS OF THIS MANUAL.

Introduction

Before using this equipment, and to ensure the safe operation of your **A150F mobile hoist**, carefully read this entire manual, especially the section on “**Cautions**”. The **A150F** is designed to be used in conjunction with Prism Medical UK UK accessories and slings although other manufacturers slings can be used following a risk assessment. Please refer to any user guides supplied with these components and refer to them while reviewing this manual.

Should any questions arise from reviewing this manual contact your local authorised Prism Medical UK UK Representative. Failure to comply with warnings in this manual may result in injury to either the operator, or the individual being hoisted/transferred. Damage to the hoist and/or related components may also occur. Be sure that the contents of this manual are completely understood prior to using this hoist.

Store this manual with the documents included with the hoist and sling (s). Contents of this manual are subject to change without prior written notice.

Overview of A150F Mobile hoist

The **A150F mobile hoist** is a hoisting aid used by health care professionals to transfer clients. The hoist makes it possible to move mobility impaired individuals with minimal strain or risk to the caregiver, while providing complete safety, dignity and comfort for the client.

The **A150F mobile hoist** is one of two components that make up this technology. The other component, the sling, is a specially designed fabric accessory that attaches to the hoist by means of a carry bar and straps, and holds an individual while the hoist, or transfer takes place. The sling is generally supplied with the hoist at the initial time of purchase. Please refer to any user guides supplied with the sling and reference them while reviewing this manual.

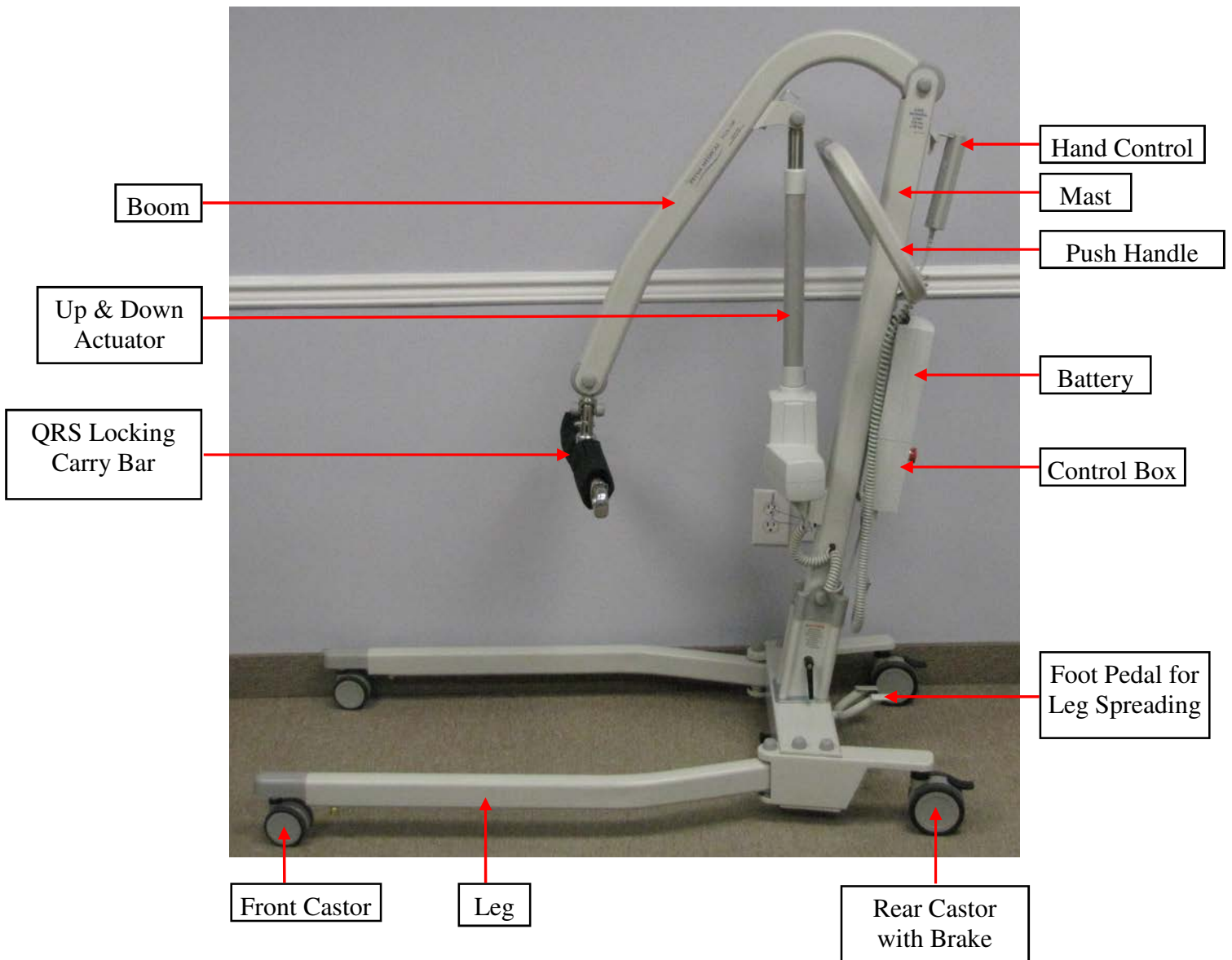
The **A150F mobile hoist** has the ability to hoist an individual up from one position such as bed, then move the individual to another position within the room and finally lower the individual into a chair etc. The functions of hoisting up or down, or opening and closing the legs on the hoist, are accomplished by pressing buttons on the hand control. The hand control is attached to the hoist. Due to the design of the hoist system, it takes very little effort to press a button to perform the desired motion.

Please familiarise yourself with the components of the **A150F mobile hoist** by referring to the diagram on the next page.

Model Table for A150F Mobile hoist

Product Code	Product Description
A-150F	A150F - Folding Aluminium Mobile Hoist - 150KG SWL

Components of the A150F Mobile hoist



QRS Locking Carry Bar

Component List

The following components are included with your new **A150F mobile hoist** system:

- A150F mobile hoist
- Hand Control
- Hoist Integrated Charger
- Charger Cord
- Owner's Manual
- Multi Function Wrenches



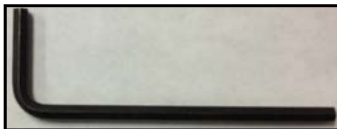
- 5 mm Hex Allen Key (Short Arm)



- 4 mm Hex Allen Key (Short Arm)



- 3 mm Hex Allen Key (Short Arm)



SLINGS: If a sling has been supplied with hoist, then refer to the instructions included with the sling.

ACCESSORIES: If additional accessories such as a weigh scale have been supplied with the hoist, then refer to the instructions included with those items.

IMPORTANT: Before initial use, the hoist unit must be charged for 4 to 5 hours. Refer to section titled "**Charging Instructions**". The Hand control must also be connected to the hoist. If it is not connected, then refer to the section titled "**Assembly Instructions**".

SLINGS: If a sling has been supplied with the hoist refer to the instructions included with the sling.

ACCESSORIES: If additional accessories such as a weigh scale have been supplied with the hoist refer to the instructions included with those items.

IMPORTANT: Before initial use, the hoist unit must be charged for 4 to 5 hours. Refer to section titled "**Charging Instructions**". The hand control must also be connected to the hoist. If it is not connected refer to the section titled "**Assembly Instructions**".

Technical Specifications: A150F hoist

(A) Dimensions and Weight - A150F hoist

Specification	A150F
Maximum weight capacity	150 kg
Maximum hoisting height	164 cm
Minimum hoisting height	42.8 cm
Height to top of legs	13.3 cm
Clearance from bottom of legs to floor	7.2 cm
Overall length	128 cm
Distance inside the legs (min.)	58.6 cm
Distance inside the legs (max.)	95 cm
Distance outside the legs (min.)	66 cm
Distance outside the legs (max.)	104 cm
Reach at maximum height	38.8 cm
Reach at minimum height	17.8 cm
Maximum Reach-Distance between center of carry bar to front of the mast	57.9 cm
Turning radius	136.5 cm
Wheels (dual-wheel castors)	Front – 76 mm
	Rear – 101 mm - with brake
Weight of hoist	36 kgs
Total Shipping Weight with Box	42.6 kgs
Folded Dimensions:	
Length	22 cm
Width	61.5 cm
Height	39.5 cm

(B) Electrical Specifications - A150F hoist

Hoist Motor:	24 VDC, 10.5 Amps Max.
Charger Input:	100-240 VAC, 50-60 Hz, 0.4 Amps Max.
Charger Output:	24 VDC, 0.65 Amps
Batteries:	24 VDC (2 x 12 VDC) 2.9 Ah, Sealed Lead Acid
Hand Control:	Electric
Hoisting Range:	429mm to 1641mm
Hoist Weight:	36Kgs
Maximum Load:	150Kgs
Duty Cycle:	10% use, 90% rest
Rated Performance:	30 hoists at 150Kgs, 10% duty cycle.

Maximum load of the hoist is determined by referring to the product label located on side of hoist.

Shipping/Storage Conditions:

Temperature: -40 to +70 °C
 Relative Humidity: 10 to 100% RH
 Atmospheric Pressure: 500 to 1060 hPa

Normal Operating Conditions:

Temperature: +10 to +70 °C
 Relative Humidity: 30 to 75% RH
 Atmospheric Pressure: 700 to 1060 hPa



Cautions:

- Under no circumstance should the **A150F mobile hoist** and sling (s) be put in control of a person who has not been properly trained in the use and care of this equipment. Failure to adhere to this warning may result in serious injury to the operator, and/or the individual being hoisted/ transferred.
- The **A150F mobile hoist** and sling (s) are not toys. Do not use it for unsafe practices. Do not allow children to play with the mobile hoist or any of its components.
- The manufacturer's warranty is voided if persons unauthorised by Prism Medical UK Ltd. will perform work on the **A150F mobile hoist**.
- There are no user serviceable parts inside the actuator. Do not remove cover screws, or open the unit, as this will **VOID THE WARRANTY**.
- In facilities where more than one operator will be responsible for using the **A150F mobile hoist** and sling (s), it is imperative that all such members are to be trained in its proper use. A training program should be established by the facility to acquaint new operators with this equipment.
- Never expose the **A150F mobile hoist** directly to water. Warranty does not cover any misuse or abuse of the hoist system.
- To maintain optimum function, the **A150F mobile hoist** should be inspected and maintained on a regular basis. See the section titled “**General Inspection and Maintenance**”.
- Any accessories used with the **A150F mobile hoist** including sling (s), should be checked to ensure that they are in good working order. Check for signs of wear or fraying prior to use. Report any unusual wear, or damage immediately to your local authorised Prism Medical UK Service Provider.
- The **A150F mobile hoist** and associated sling (s) are intended **only** for hoisting and transferring of a person. Prism Medical UK will not be responsible for any damage caused by the misuse, neglect or purposeful destruction of the hoist, and/or its associated components.
- In any circumstances do not exceed the maximum allowable load of this hoist. Refer to the “**Specifications**” section of this manual, and/or the labels on the side of the hoist.
- There is a risk of explosion if the hoist is used in the presence of flammable anaesthetics.
- Ensure that a clear space is maintained around the hoist. Move any obstacles out of the way before operating the hoist.

Assembly Instructions:

1. Place the Carton/Packaging box in a clear working area, open carefully, and remove following items and place on the floor, taking care to protect the finish from damage.
 - A150F mobile hoist in folded condition
 - Battery Pack, Control Box, and Charging Power Cord
 - Hand Control
 - Tool Kit
 - User Manual, and Test Certificate



**Caution: Hoist parts are heavy, and will need to be hoisted with care.
Heavier items may need two people for assembly.**

2. Hoist the A150F carefully from the carton and place on the floor as shown in Figure 1, and 2. Lock the rear castors. Remove the mast locking handles from the base tube as shown in Figure 2.



Figure 1



Figure 2

Mast Locking Handles

3. Release the leg and mast assembly by unfastening the restraining string from the mast "L" bracket as shown in Figure 3, and 4. This string will retract back into the bottom of the legs.



Figure 3



Figure 4

Assembly Instructions:

- Using push handle, lift the Mast with Boom assembly upright, and hold in the vertical position as shown in Figure 5, 6, and 7.



Figure 5



Figure 6



**Caution: Possible finger trap. Keep fingers away from the end of the mast when rotating into the base tube.
Heavier items may need two people for assembly.**

- Using mast locking handles, secure the hoist mast in the upright position on the base assembly as shown in Figure 8. Tighten the mast locking knob as shown in Figure 9. Adjust the position of the locking handles pointing in downward direction towards the base of the hoist(or ground) as shown in Figure 9. Ensure both washers are present at either end of the locking handles.



Figure 8

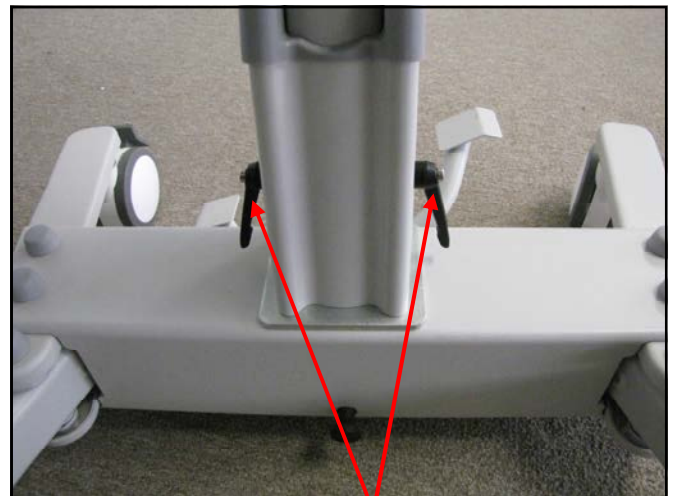


Figure 9

Mast Locking Handles

Caution: The mast must be supported in the upright position whilst the locking handles are inserted to prevent it from falling forward accidentally.

Assembly Instructions:

- Open legs fully as shown in Figure 10. Make sure that leg locking knob inserts flush against the base assembly and legs will no longer move freely as shown in Figure 11. The legs will then only operate by the use of the foot pedal located at the rear of the base as shown in Figure 12.

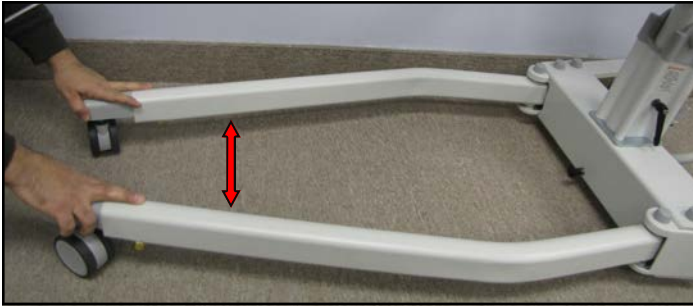
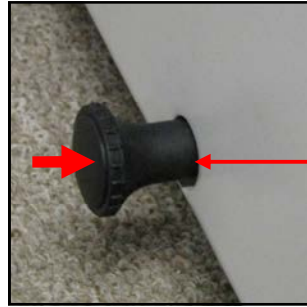


Figure 10



Leg locking knob flush with the base assembly when the legs are fully opened.

Figure 11



Figure 12

- Release carry bar from retaining cradle as shown in Figure 13, and 14. Unlock the rear castors.



Figure 13



Figure 14

Assembly Instructions:

Detaching QRS Locking Carry Bar from the Hoist:

8. To detach the QRS Locking Carry Bar from Quick Release Hook, Open the latch by pushing the latch down as shown in Figure 15, and 16. While keeping the latch pushed down, Tilt the carry bar approximately 90 degrees, and remove the carry bar from the quick release hook as shown in Figure 17 and Figure 17A.



Figure 15



Figure 16



Figure 17



Figure 17A

Assembly Instructions:

9. Remove the middle screw from the mounting bracket using 3 mm Allan Key as shown in Figure 18.
10. Press the A150F CBJ Care Control Box against the mounting bracket and slide it down. The control box should be seated securely on top of the edge of bracket as shown in Figure 19.
11. Mount the Control Box to the mounting bracket using same screw that you removed from the middle of the bracket as shown in Figure 20.



Figure 18



Figure 19



Figure 20

12. To install the battery, you will need to press the battery against the bracket and slide it down until it sits straight on top of the control box as shown in Figure 21. Make sure to secure the battery box by latching the battery lock into the bracket as shown in Figure 22.



Figure 21



Figure 22

Assembly Instructions:

13. Connect all the cables to the control box as shown in the picture below.

- A. Connect the Hand Control connector to the large circle on the left side of the control box as shown in the Figure 23.
- B. Connect the Up/down Actuator Cable connector to the second circle (Marked No. 1) from the left side of the control box as shown in the Figure 24.
- C. Connect the Mains Cable/Power Cord to the rectangular outlet on the control box as shown in the Figure 25.



Figure 23



Figure 24



Figure 25

14. **Please make sure to charge battery before initial use and before each operation of hoist.**

After assembly, check to ensure that:

1. Legs are fully engaged, and leg locking knob is flush with base tube.
2. The mast is fully locked into position.
3. The RED emergency stop button on control box is in the OFF (out) position.
4. Hoisting actuator moving up and down with the buttons on the hand control, and control box.
5. Emergency lowering (mechanical, and electrical) function works properly.
6. Rear wheel brakes works properly.
7. Leg spreading foot pedal works properly.
8. Battery is fully charged.

Disassembly Instructions:

1. Lower the mast to the lowest position as shown in Figure 26, and insert the carry bar into the retaining cradle as shown in Figure 27..



Figure 26



Figure 27

2. Pull the Leg Locking Knob away from the base tube as shown in Figure 28, and close the legs tightly together as shown in Figure 29.



Figure 28



Figure 29

3. Remove mast locking handles as shown in Figure 30, and fold Mast & Boom assembly carefully toward the legs using the push handle as shown in Figure 31.



Figure 30



Figure 31

Disassembly Instructions (continued):

4. Insert the mast locking handles into the base tube to avoid misplacement.
5. Pull out the restraining string from the legs (besides the front castors as shown in Figure 32A), and fix the string on the mast "L" bracket as shown in Figure 32. This will keep the legs, mast, and boom assembly together during transportation, and storage.



Figure 32



Caution: Avoid pinching/trapping fingers while fixing the string on the mast "L" bracket as the string has spring action.

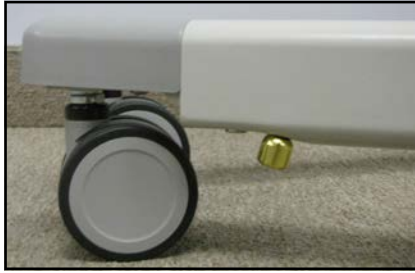


Figure 32A

6. A150F Portable hoist is ready for transportation as shown in Figure 33, and for storage purpose as shown in Figure 34.



Figure 33



Figure 34



Caution: During transportation, remove the battery, and hand control from the hoist to avoid damage.

Operation:

⚠ Caution: Visually inspect the hoist before using for any unusual wear and tear. Should anything look unusual then contact your local representative prior to use.

Failure to comply with this caution could result in serious injury to the operator, the individual being hoisted and/or damage to the hoist.

Because of the safety function in the actuator the hoisting arm and hanger bar can “fall down” to the height of the spindle. Therefore, both before and after each hoisting operation, press the hoisting arm down to ensure that it is supported by the actuator. This must be done, to remove the possibility of the hoisting arm “falling down” and the risk of subsequent injury occurring.

Charging:

The “On” light illuminates when you plug the control box to the power outlet and should turn off when it is unplugged. The “Charge” light illuminates, and when you connect the battery to the control box and it is charging as shown in the Figure 35. The “Charge” light will turn off when the battery is finished charging.

The hoist should be plugged in for charging whenever the hoist is not in use to get the max number of cycles out of the battery. **An audible battery alarm will sound when approximate 50% of battery capacity remaining.** To obtain max life, charge the battery at no more than 30% discharge.

Please Note: The battery can be charged whether the Emergency Stop is activated or not.



**Charging Indicator Light ON
when Hoist is charging**

Start:

The Hand Control has two functions up and down. Press down on the symbols to operate the desired function. It is not possible to use two functions at the same time.

An audible alarm will sound once the load becomes too great on the hoist. This will cause the hoisting operation to stop. Do not continue to operate the handset by repeatedly pressing the buttons. At this point the hoist has reached its maximum hoist. This is a purposefully built in safety feature.

Please Note!

The emergency stop must be released at all times during normal operation.

Operation:

Forward Movement:

To move the hoist forward, hold onto the handle bar and push forward. Alternatively, the caregiver can also place one foot on the base tube and push forward with their foot.



Turning:

When turning the hoist, stand on along one side. With one hand pull gently on the handle bar, and with the other hand push gently away on the hoisting arm. In this way the hoist will rotate around its own axis. This movement is performed with a smooth, slow action to avoid swinging the patient unnecessarily.



Warning:

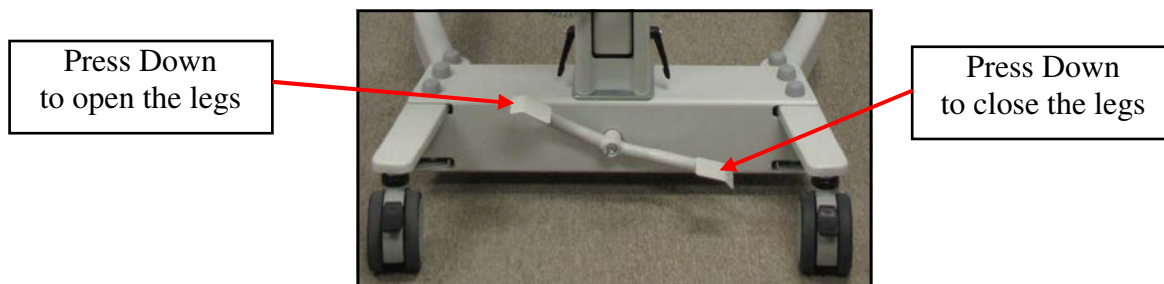
Do not hold on to the actuator or swing link when turning the hoist as there is a risk of getting your fingers caught.

Operation:

Leg Adjustment:

The legs of A150F hoist are mechanically adjustable for opening, and closing base width. The legs can be opened to enable access around arm chairs or wheel chairs. For transferring through narrow doorways, and passages the hoist legs should be in closed position.

Leg adjustment is achieved by pressing the foot pedal located at the rear of base. To open the legs, press down the left side, and to close the legs press down the right side as shown below.



Raising and Lowering the Boom:

The up and down movement of boom on A150F hoist is achieved by a powerful electric actuator which is controlled by hand control. The hand control has two buttons with directional arrows UP and DOWN. The actuator stops automatically at the limit of travel in both directions.

Castors and Braking:

The A150F hoist has two rear castors with a brake. The rear castors can be braked for rotation, lateral movement, and parking. To apply the brake, press the brake pedal down with your foot. To release the brake, press the raised pedal towards the wheel.

During the hoisting procedure, the rear wheels should remain unlocked so that the hoist will move to the patient's centre of gravity.



Warning: Locked wheels during hoisting will increase the risk of the hoist tilting over.

Application:

If the hoist is used incorrectly any warranty or product liability might cease to be valid.

The mobile hoist must only be used for person hoisting and only for persons who, including the sling, do not weigh more than the stated maximum weight load stated on the hoist. If the load exceeds the stated weight limit and if the hoist is used for hoisting anything other than persons, then any product liability that Prism Medical UK might have, in connection with insurance / warranty / maintenance etc., will cease to be valid.

To avoid possible accidents and injury to persons being hoisted, the hoists must only be operated as described in the preceding pages.

Basics in transferring an individual

⚠ Caution: The following steps are intended to generally illustrate the procedure involved in the hoisting and transferring of an individual from one location to another using the hoist.

The manual for the sling that was purchased with the hoist should be reviewed in detail prior to attempting these steps, as the sling illustrated here may not be the same as the one that was purchased.

Contact your local authorised Prism Medical UK Representatives if you have any questions or concerns.

Step 1) Unplug the hoist from its charging station or current location and move to the vicinity of the individual that is to be transferred. Use the procedures for up and down and transferring as described in the sections titled, “**Start**”, “**Forward Movement**” and “**Turning**”.

⚠ Caution: Always use extreme care when moving the hoist from one location to another. Watch out for, and avoid any obstructions that may cause injury to the individual in the sling, or damage to the hoist.

Step 2) Prepare the individual being transferred with the appropriate sling. Refer to the instructions supplied with the sling that was purchased on how to properly fit an individual with a sling.

⚠ Caution: Always make sure that the sling is correctly fitted and adjusted on each side of the individual so that maximum comfort and safety are achieved prior to hoisting.

Step 3) Once the individual has been fitted with the sling, move the hoist so that the carry bar it is positioned **directly over the individual and utilize leg opening function if required**. Lower the carry bar to a height so that the straps of the sling can be easily attached to the carry bar.

⚠ Caution: Always check to ensure that the carry bar is correctly positioned directly above the person to be hoisted.

⚠ Caution: Check to ensure that the carry bar has no cuts, dents or sharp edges that may come in contact with the straps of the sling and cause damage to them. Report any concerns to your local authorised representative.

Step 4) Attach the straps of the sling to the hooks of the carry bar following the sling manufacturers user guide. Be sure to double check to ensure that the straps are properly attached to the carry bar, and that the individual being hoisted is properly positioned in the sling prior to hoisting.

⚠ Caution: Prior to hoisting an individual make sure that the straps of the sling are securely placed on the hooks of the carry bar.

Basics in transferring an individual ... continued

Step 5) The individual may now be raised using the UP button on the hand control. While hoisting is in progress the height required in order for the transfer to be completed safely should be closely observed. Ensure that the individual being hoisted will not be injured by any obstructions during the initial hoisting.

⚠ Caution: Always use caution when lowering/raising an individual who is in the sling of the hoist. Watch out for and avoid any obstructions that may cause injury to the individual, or damage to the hoist.

Step 6) Once at the correct height the individual can be moved to the desired location. Refer to the sections already described in this manual on how to do so.

Step 7) Once at the desired location the individual in the sling can be lowered/raised to the correct height in order to complete the transfer. On completion of lowering/raising ensure that the individual is correctly positioned and safely supported prior to removing the straps of the sling from the carry bar.

⚠ Caution: Prior to removing the straps of the sling from the carry bar be sure to check that the individual being hoisted is securely supported in the final desired position.

Step 8) Lower the carry bar sufficiently to allow the straps of the sling to be easily removed from the carry bar. Take care not to let the carry bar come in contact with the individual in the sling. The straps from the sling can now be removed from the carry bar. The hoist should then be moved away from the immediate area so that it will not interfere with the removal of the sling from the client.

Step 9) The sling can now be gently removed from the individual. It should then be stored in a safe place for future use.

Step 10) The hoist can now be moved to a safe location until further use, or relocated to its original location. The hoist should be turned off when not in use. It is recommended that the hoist be left on charge when not in operation. Refer to the section titled, "**Charging the hoist**" for instructions on charging.

Emergency Stop & Lowering:

⚠ Caution: The manual emergency lowering system should be used only if the lowering procedures described in the previous section of the manual do not work. Should you have any concerns or questions contact your local authorised Prism Medical UK Representative.

⚠ Caution: DO NOT use the hoist after the manual lowering mechanism has been used. The hoist must be reset by a qualified hoist technician after use. Contact your local authorised Prism Medical UK Service Provider.

Emergency Stop:

Push the Emergency Stop button to cut all power on the Hoist. To resume power, release the emergency stop button by turning in the clockwise direction as indicated by arrows on the Emergency Stop button.

Electrical emergency lowering:

To operate the emergency lowering button on the control box, insert a fine tip, such as the tip of a ball point pen in the hole that is marked with a \perp symbol below. Press and hold in. The hoist will continue lowering as you continue pressing inwards. Release to stop the emergency lowering.



Emergency Stop Button

Emergency Lowering Button

Insert a fine tip, such as the tip of a pen, in the hole that is marked with a \perp symbol below. Press and hold in. The hoist will continue lowering as you continue pressing in. Release to stop the emergency lowering.

Mechanical emergency lowering:

In case of power failure, it is possible to place in A150F hoist.

In order to lower the boom in an emergency situation, pull up the red lever located directly on the hoist's actuator. Release the lever once you have lowered the boom to a safe position.

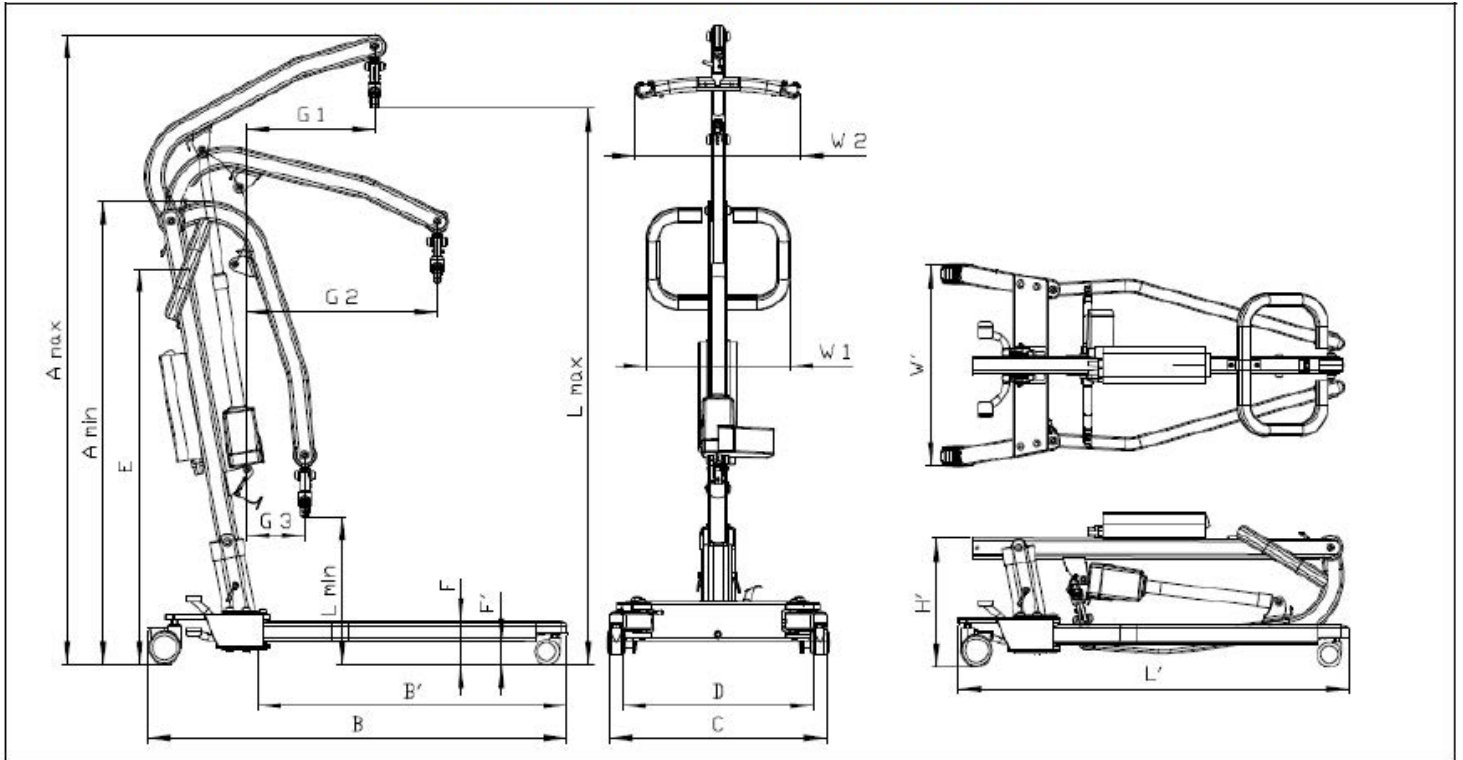


mechanically lower a patient

emergency situation, pull up the red lever. The boom will lower as you release the red lever once you have lowered

Technical Specifications– A150F Portable hoist

Specification for the A-150F folding mobile hoist



Max. load and weight in kg. and Dimensions in cm.

Max. load	A		B	B'	C	D	F	F'	E	G			L		W1	W2	Folding			N.W.	Turning diameter
	Max.	Min.								G1	G2	G3	Max.	Min.			L'	W'	H'		
150	187.3	138.2	128	94	66~104	58~95	13.3	7.2	110	38.8	57.9	17.8	164	42.8	42.8	55.0	122	61.5	39.5	36	136.5

DO'S & DON'TS

DO

- ✓ Do charge the battery whenever possible. This will extend the battery life. A large number of cycles can be obtained from operating on the batteries, but battery lifetime is reduced with frequent discharging.
- ✓ Do inspect all cables particularly the mains power cable on the charger for any damage; replace where necessary.
- ✓ Do stow the handset and if fitted with charger, the mains power cable when transporting the hoist.
- ✓ Do clean the actuators, control box, charger, battery and handset at regular intervals to remove dust and dirt.

The exterior of the hoist should only be cleaned, disinfected and sterilized using isopropyl alcohol. Damp a cloth with isopropyl alcohol and wipe down entire exterior of hoist. No other chemicals and/or liquids should be used to clean, disinfect and sterilize this hoist.

⚠ Caution: Take great care to ensure that no liquids get inside the hoist. This hoist is not drip proof or water tight. Failure to protect the hoist from liquids may result in damage to the hoist and/or may cause personal injury.

DON'T

- ✗ Don't allow the batteries to fully discharge before connecting to the charger. The batteries are a lead-acid gel cell type that can be trickled charged continuously (batteries used for standby) and have a high current discharge capacity. Life is greatly reduced by deep or complete discharging of the batteries. Longer lifetime is obtained by maintaining fully charged batteries.
- ✗ Don't continue to operate the handset by repeatedly pressing the buttons if the hoist function will not move or the actuator will not function. If this occurs then the actuator has either reached its end position, the load is too great or there is a malfunction.
- ✗ Don't exert excessive force on the handset cable as this may damage the wires inside the cable and prevent some or all of the operations.
- ✗ Don't continually operate the hoist functions. The system is not designed for continuous operation. Continuous Operation will cause batteries to be deeply discharged or to damage the actuator or control box by overheating.

Trouble Shooting

Should problems arise with the use of the hoist review the following chart. Find the fault and complete the recommended solution. If the fault is not found and/or the solution does not correct the problem contact your local Prism Medical UK authorised Service Provider for service immediately.

PROBLEM	SOLUTION
Hoist cannot raise/lower, control box is not clicking.	<ul style="list-style-type: none"> ● Hand control is not properly plugged in. ● Hand control is defective. ● Control box is defective. ● Emergency stop button is pushed in. ● Mains cable is not plugged into the control box.
Hoist cannot raise/lower, control box is clicking.	<ul style="list-style-type: none"> ● Lifting actuator cord (1) is not fully plugged into slot (1) on the control box. ● Lifting actuator is defective.
Emergency Lower button on control box does not lower.	<ul style="list-style-type: none"> ● Lifting actuator cord (1) is not fully plugged into slot (1) on the control box. ● Lifting actuator is defective. ● Control box is defective.
Hoist cannot spread or close legs.	<ul style="list-style-type: none"> ● Foot pedal is defective.
Cannot move hoist.	<ul style="list-style-type: none"> ● Rear castor brake is engaged. ● Castors are defective.
Cannot tighten Mast into Base tube.	<ul style="list-style-type: none"> ● Mast locking assembly are defective, replace with new Mast locking assembly .

General Inspection and Maintenance

A) Each Use - To be completed by User

- All functions on hand control are operational.

B) Semi-Annually - To be completed at least every 6 months.

Should any of these items fail the inspection do not use the hoist. Contact Prism Medical UK or your local qualified service technician for service.

- Complete the inspection as noted in the “Each Use” section above.

Also check the following:

- Battery charger functional.
- Weigh scale functional (if applicable).
- Castors are clean and free of debris.
- All bolts and attachment points are secure (see next page for “Points of Attachment”)
- Visual inspection of all weld points and cast components.
- Check operation of the emergency stop button.

C) Annually - To be completed at least every 12 months.

- Complete the inspection as noted in the “Semi-Annually” section above.

Also check the following:

- Perform a working load test of one (1) hoisting cycle with the maximum load. This is in accordance to the periodic inspection requirements of EN ISO10535:2006 Annexe B.
- Check functional operation of the emergency lowering mechanism.
- All bolts in connection with the carry bar must be inspected, greased and tightened. All defective or worn components must be replaced.
- Connection bolts/bearings between arm and mast to be inspected. All defective or worn components must be replaced.
- Leg spreading function to be tested and all bolts to be inspected. All defective or worn components must be replaced.
- Check that main actuator is functional.



This section to be only completed by a qualified service technician as authorised by Prism Medical UK. Use the provided service record history sheets to note findings during inspection.

Hoist - Points of Attachment

Visually inspect the areas shown.



Service Record History - Initial Information

- Complete the following section on **Purchase and Service Information** as soon as this equipment is purchased.
- Use the service record history to record to any completed service and repairs.
- Ensure that the service record is signed and dated each time it is used.
- Be sure to have this piece of equipment serviced on a regular basis as described in the General Inspection and Maintenance Section.

PURCHASE INFORMATION:

Product Name: **A150F hoist** **Model #:** _____
Serial #: _____

Date of Purchase: _____

Purchased From: _____
(local authorised Prism Medical UK Representative)

Address: _____

City: _____ **Postal Code:** _____

Telephone No: _____

Comments:

SERVICE INFORMATION:

Contact the following company for service:

Company: _____
(local authorised Prism Medical UK Representative)

Address: _____

City: _____ **Postal Code:** _____

Telephone No: _____

Comments:

Service Record History

Complete this section after each service, repair inspection and/or maintenance. Photocopy additional pages as required.

Date: _____	Time: _____
Service Type: <input type="checkbox"/> Periodic Inspection <input type="checkbox"/> Monthly Inspection <input type="checkbox"/> 6 Month Inspection <input type="checkbox"/> Repair <input type="checkbox"/> Yearly Inspection <input type="checkbox"/> Other: _____	
Completed By: _____	
Printed Name	Signature
Company: _____	
Remarks & Action Taken:	

Date: _____	Time: _____
Service Type: <input type="checkbox"/> Periodic Inspection <input type="checkbox"/> Monthly Inspection <input type="checkbox"/> 6 Month Inspection <input type="checkbox"/> Repair <input type="checkbox"/> Yearly Inspection <input type="checkbox"/> Other: _____	
Completed By: _____	
Printed Name	Signature
Company: _____	
Remarks & Action Taken:	

Date: _____	Time: _____
Service Type: <input type="checkbox"/> Periodic Inspection <input type="checkbox"/> Monthly Inspection <input type="checkbox"/> 6 Month Inspection <input type="checkbox"/> Repair <input type="checkbox"/> Yearly Inspection <input type="checkbox"/> Other: _____	
Completed By: _____	
Printed Name	Signature
Company: _____	
Remarks & Action Taken:	

Date: _____	Time: _____
Service Type: <input type="checkbox"/> Periodic Inspection <input type="checkbox"/> Monthly Inspection <input type="checkbox"/> 6 Month Inspection <input type="checkbox"/> Repair <input type="checkbox"/> Yearly Inspection <input type="checkbox"/> Other: _____	
Completed By: _____	
Printed Name	Signature
Company: _____	
Remarks & Action Taken:	

Date: _____	Time: _____
Service Type: <input type="checkbox"/> Periodic Inspection <input type="checkbox"/> Monthly Inspection <input type="checkbox"/> 6 Month Inspection <input type="checkbox"/> Repair <input type="checkbox"/> Yearly Inspection <input type="checkbox"/> Other: _____	
Completed By: _____	
Printed Name	Signature
Company: _____	
Remarks & Action Taken:	

Date: _____	Time: _____
Service Type: <input type="checkbox"/> Periodic Inspection <input type="checkbox"/> Monthly Inspection <input type="checkbox"/> 6 Month Inspection <input type="checkbox"/> Repair <input type="checkbox"/> Yearly Inspection <input type="checkbox"/> Other: _____	
Completed By: _____	
Printed Name	Signature
Company: _____	
Remarks & Action Taken:	

Service Record History

Complete this section after each service, repair inspection and/or maintenance. Photocopy additional pages as required.

Date: _____		Time: _____	
Service Type: <input type="checkbox"/> Periodic Inspection <input type="checkbox"/> Monthly Inspection <input type="checkbox"/> 6 Month Inspection <input type="checkbox"/> Repair <input type="checkbox"/> Yearly Inspection <input type="checkbox"/> Other: _____			
Completed By: _____		_____	
Printed Name		Signature	
Company: _____			
Remarks & Action Taken:			

Date: _____		Time: _____	
Service Type: <input type="checkbox"/> Periodic Inspection <input type="checkbox"/> Monthly Inspection <input type="checkbox"/> 6 Month Inspection <input type="checkbox"/> Repair <input type="checkbox"/> Yearly Inspection <input type="checkbox"/> Other: _____			
Completed By: _____		_____	
Printed Name		Signature	
Company: _____			
Remarks & Action Taken:			

Date: _____		Time: _____	
Service Type: <input type="checkbox"/> Periodic Inspection <input type="checkbox"/> Monthly Inspection <input type="checkbox"/> 6 Month Inspection <input type="checkbox"/> Repair <input type="checkbox"/> Yearly Inspection <input type="checkbox"/> Other: _____			
Completed By: _____		_____	
Printed Name		Signature	
Company: _____			
Remarks & Action Taken:			

Date: _____		Time: _____	
Service Type: <input type="checkbox"/> Periodic Inspection <input type="checkbox"/> Monthly Inspection <input type="checkbox"/> 6 Month Inspection <input type="checkbox"/> Repair <input type="checkbox"/> Yearly Inspection <input type="checkbox"/> Other: _____			
Completed By: _____		_____	
Printed Name		Signature	
Company: _____			
Remarks & Action Taken:			

Date: _____		Time: _____	
Service Type: <input type="checkbox"/> Periodic Inspection <input type="checkbox"/> Monthly Inspection <input type="checkbox"/> 6 Month Inspection <input type="checkbox"/> Repair <input type="checkbox"/> Yearly Inspection <input type="checkbox"/> Other: _____			
Completed By: _____		_____	
Printed Name		Signature	
Company: _____			
Remarks & Action Taken:			

Date: _____		Time: _____	
Service Type: <input type="checkbox"/> Periodic Inspection <input type="checkbox"/> Monthly Inspection <input type="checkbox"/> 6 Month Inspection <input type="checkbox"/> Repair <input type="checkbox"/> Yearly Inspection <input type="checkbox"/> Other: _____			
Completed By: _____		_____	
Printed Name		Signature	
Company: _____			
Remarks & Action Taken:			

Service Record History

Complete this section after each service, repair inspection and/or maintenance. Photocopy additional pages as required.

Date: _____		Time: _____	
Service Type: <input type="checkbox"/> Periodic Inspection <input type="checkbox"/> Monthly Inspection <input type="checkbox"/> 6 Month Inspection <input type="checkbox"/> Repair <input type="checkbox"/> Yearly Inspection <input type="checkbox"/> Other: _____			
Completed By: _____		_____	
Printed Name		Signature	
Company: _____			
Remarks & Action Taken:			

Date: _____		Time: _____	
Service Type: <input type="checkbox"/> Periodic Inspection <input type="checkbox"/> Monthly Inspection <input type="checkbox"/> 6 Month Inspection <input type="checkbox"/> Repair <input type="checkbox"/> Yearly Inspection <input type="checkbox"/> Other: _____			
Completed By: _____		_____	
Printed Name		Signature	
Company: _____			
Remarks & Action Taken:			

Date: _____		Time: _____	
Service Type: <input type="checkbox"/> Periodic Inspection <input type="checkbox"/> Monthly Inspection <input type="checkbox"/> 6 Month Inspection <input type="checkbox"/> Repair <input type="checkbox"/> Yearly Inspection <input type="checkbox"/> Other: _____			
Completed By: _____		_____	
Printed Name		Signature	
Company: _____			
Remarks & Action Taken:			

Date: _____		Time: _____	
Service Type: <input type="checkbox"/> Periodic Inspection <input type="checkbox"/> Monthly Inspection <input type="checkbox"/> 6 Month Inspection <input type="checkbox"/> Repair <input type="checkbox"/> Yearly Inspection <input type="checkbox"/> Other: _____			
Completed By: _____		_____	
Printed Name		Signature	
Company: _____			
Remarks & Action Taken:			

Date: _____		Time: _____	
Service Type: <input type="checkbox"/> Periodic Inspection <input type="checkbox"/> Monthly Inspection <input type="checkbox"/> 6 Month Inspection <input type="checkbox"/> Repair <input type="checkbox"/> Yearly Inspection <input type="checkbox"/> Other: _____			
Completed By: _____		_____	
Printed Name		Signature	
Company: _____			
Remarks & Action Taken:			

Date: _____		Time: _____	
Service Type: <input type="checkbox"/> Periodic Inspection <input type="checkbox"/> Monthly Inspection <input type="checkbox"/> 6 Month Inspection <input type="checkbox"/> Repair <input type="checkbox"/> Yearly Inspection <input type="checkbox"/> Other: _____			
Completed By: _____		_____	
Printed Name		Signature	
Company: _____			
Remarks & Action Taken:			

NOTES:

NOTES:

Warranty

This Warranty does not affect or in any way limit your Statutory Rights

- 1) Prism Medical UK guarantees all equipment supplied as new, against failure within the period of 1 year from date of purchase by virtue of defects in material or workmanship.
- 2) This warranty does not apply to failure attributable to normal wear and tear, damage by natural forces, user neglect or misuse or to deliberate destruction, or to batteries more than 90 days after original purchase.
- 3) This equipment warranty shall be void if the equipment is not serviced by Prism Medical UK or its authorised service agents in accordance with the manufacturer's recommendations or if any unauthorised person carries out works on the equipment.
- 4) The liability of Prism Medical UK under the terms of this guarantee shall be limited to the replacement of defective part (s) to the sales distributor, dealer, agent, person or entity which purchased the equipment from Prism Medical UK. In no event shall Prism Medical UK incur liability for any consequential or unforeseeable losses.

TM Trade-mark of Corven Health Care Inc. Used under licence.

If you have any questions about the manufacture or operation
of this equipment, please contact
Prism Medical UK, or your local authorised dealer.

PRISM MEDICAL UK

Prism Medical UK, Unit 4 Jubilee Business Park, Jubilee Way,
Grange Moor, Wakefield, WF4 4TD

Tel 0844 980 2260

www.prismmedical.co.uk

info@prismmedical.co.uk

This document conforms to EN ISO 10535:2006 requirements

